



BARACUDA®
MX8™

Owner's Manual
Guide du propriétaire
Manual de Usuario

Important Information

WARNING

RISK OF SUCTION ENTRAPMENT HAZARD, WHICH, IF NOT AVOIDED CAN RESULT IN SERIOUS INJURY OR DEATH. Ensure that your vacuum suction fittings installed in your pool for connection of your suction-side pool cleaner are certified as being compliant with applicable safety standards such as IAPMO SPS 4. Do not block the suction fittings with any part or your body. Do not expose your hair, loose clothing, jewelry, etc. to any suction outlet fittings in the pool/spa.

Notice for Vinyl Liner Pools: Before installing your pool cleaner, examine the interior of your pool carefully. If the vinyl liner is brittle or has stones, wrinkles, roots or metal corrosion in contact with the underside of the liner, or has damage to the base material or supporting walls, do not install the cleaner before having a qualified professional perform the necessary repairs or liner replacement. **Zodiac Pool Systems, Inc. (Zodiac) will not be responsible for liner damage caused by a cleaner which is in disrepair, pattern removal from a vinyl liner, or a cleaner used in a pool having an aged or deteriorated liner.** Please see Limited Warranty.

- To help prevent suction entrapment accidents, wall vacuum fittings should have a safety vac lock installed. Contact your builder or retail pool professional for details.
- Clean the skimmer basket, pump basket and pool filter before installing the cleaner and on a regular basis thereafter.
- Always disconnect the cleaner from the pool wall or skimmer before cleaning or backwashing the pool filter. After cleaning or backwashing, let the filtration system run for at least five (5) minutes before re-connecting the cleaner.
- Remove the cleaner from the pool before chemical or shock treatments. Wait a minimum of four (4) hours after super chlorination before re-installing the cleaner.

To ensure prompt warranty service, should it be required, please:

- Complete and return the Zodiac® Warranty Card.
- Record your purchase information.
- Attach a copy of your purchase receipt to this document.

Date of Purchase: _____ Purchased From: _____

Serial Number (located under the hood) _____

If service is required, simply present your manual with the attached receipt at any Zodiac warranty center.

For customer service or support:

Zodiac Pool Systems, Inc.
2620 Commerce Way
Vista, CA 92081-8438
1-800-822-7933

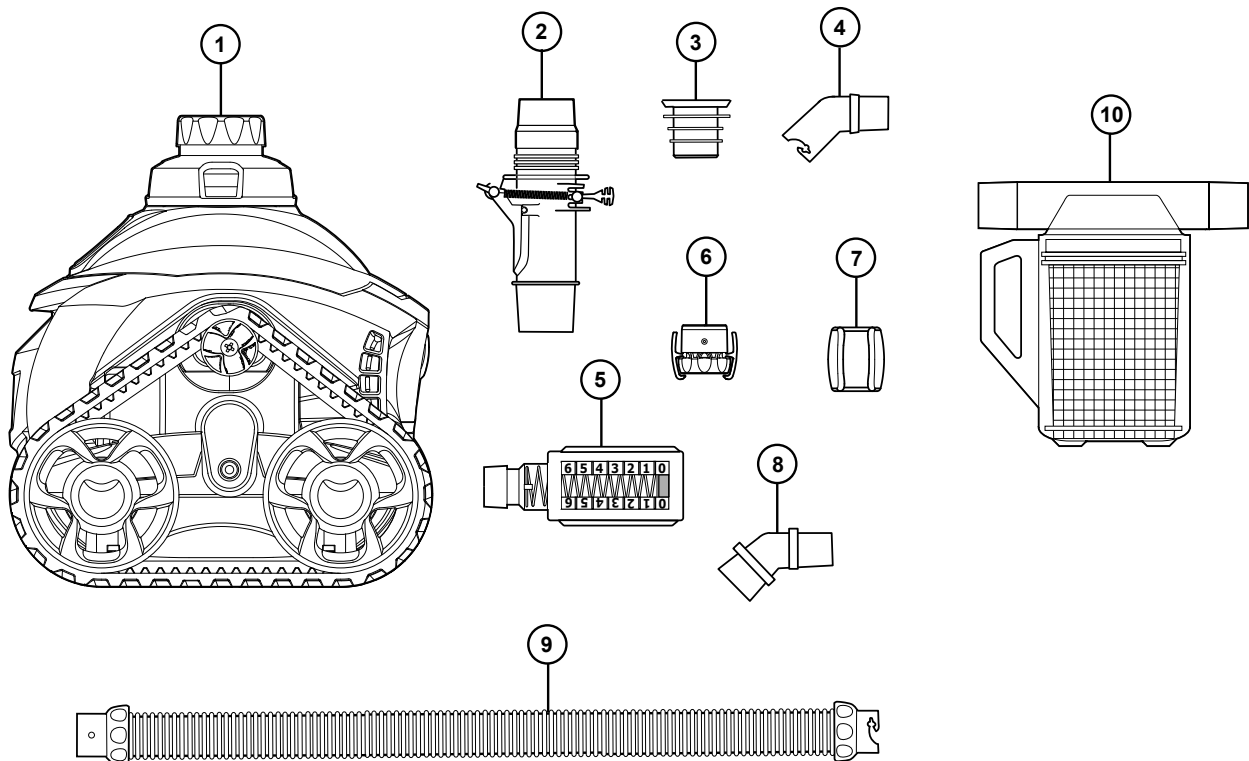
Congratulations on the purchase of your new Baracuda® MX™ 8 automatic pool cleaner. Built with proven Baracuda technology, the Baracuda MX 8 is designed and manufactured for easy installation, and years of carefree operation. Before installing the cleaner, please take a few moments to become familiar with its components and to review the items listed under **Important Information**.

Like most mechanical devices, the Baracuda MX 8 requires periodic adjustments, routine maintenance, and the replacement of certain hardworking parts. Be sure to have the Baracuda MX 8 checked occasionally by your local Baracuda dealer or service center.

Always insist on genuine Zodiac® replacement parts. Non-Zodiac parts are not made to our specifications. They may have an adverse effect on the operation of your Baracuda MX 8 or may even damage it.

Baracuda MX 8 Complete Cleaner

1. Cleaner Body
2. Flowkeeper™ Valve
3. Valve Cuff
4. Twist-Lock 45 Degree Elbow Extended
5. Flow Gauge
6. Quick Connector
7. Hose Float
8. 45 Degree Elbow
9. Twist-Lock Hose Section
10. Zodiac Leaf Catcher (W26705) (Optional device for high debris areas)



Installation

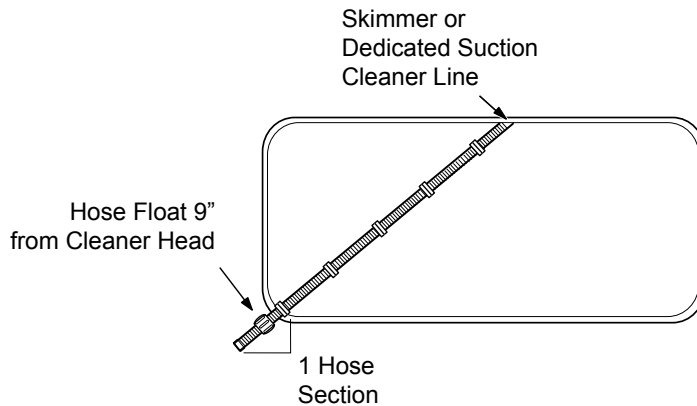
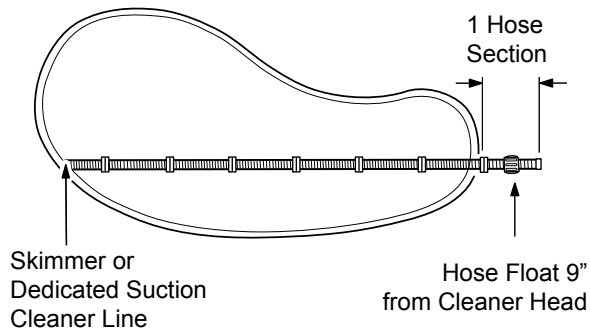
Prepare the Pool

1. Manually vacuum the pool, and make sure the pool filter and pump basket are clean.
2. Close the pool main drain line.
3. Aim the return line fittings down.

Assemble the Hose

The hose uses easy twist-lock connectors. Push and twist the connector on each hose section until they lock into position with clicking sound. The hose cuffs have three (3) connection positions. Any of the three (3) positions are sufficient for an air-tight seal.

1. Connect enough hose to reach the farthest point of the pool and then add one more section.
2. Position the hose float on the first hose section, about nine (9) inches from the cleaner head.
3. Twist lock the quick connector on the end of the hose where the head will be connected.



Connect the Hose

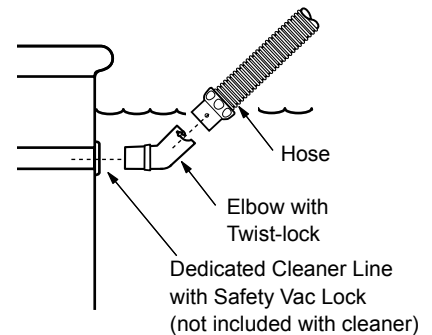
WARNING

RISK OF SUCTION ENTRAPMENT HAZARD, WHICH, IF NOT AVOIDED CAN RESULT IN SERIOUS INJURY OR DEATH. Ensure that your vacuum suction fittings installed in your pool for connection of your suction-side pool cleaner are certified as being compliant with applicable safety standards such as IAPMO SPS 4. Do not block the suction fittings with any part of your body. Do not expose your hair, loose clothing, jewelry, etc. to any suction outlet fittings or hose ends in the pool/spa.

Turn on the filtration system and fill the hose with water by placing the end in front of a return inlet until it is flooded. Turn off the pump.

To connect to a dedicated suction line:

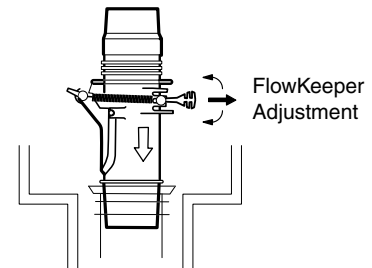
1. Twist lock the male end of the hose into the large end of the 45° elbow.
2. Connect the elbow to the safety vac wall fitting.
3. Angle the elbow upward towards the water surface.



To connect to a skimmer:

The FlowKeeper™ valve must always be used in single skimmer installations. The valve regulates flow to ensure the pool pump and cleaner run properly. It is pre-set at the factory to optimize the performance of the cleaner, but offers three (3) settings to adjust the flow.

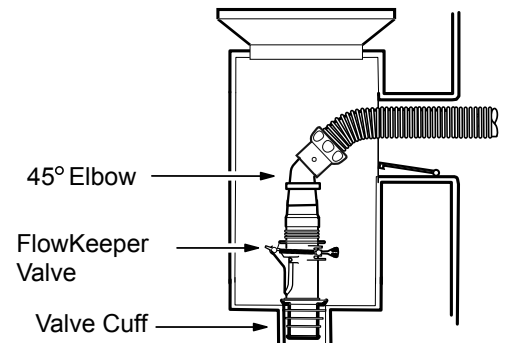
The lower the setting number, the lower the flow. To adjust, pull the handle and move setting up or down. The red tab can be used to open the valve and stop the cleaner.



If the pool has more than one skimmer, connect the hose to the one closest to the pump.

The parts used to connect the hose, and the sequence in which they are installed depends on the type of skimmer.

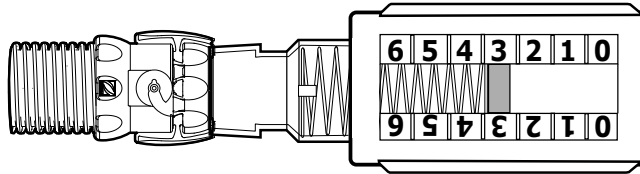
1. Remove the skimmer basket.
2. Insert the valve cuff and connect the FlowKeeper with the arrow pointing down towards the skimmer pipe.
3. Choose the fitting combination that best suits the skimmer to complete the connection.



Test and Adjust for Proper Flow

Disconnect the cleaner head and attach the Flow Gauge. Keep the Flow Gauge under water and have someone turn on the pump.

Verify that the red indicator in the gauge (viewed from the side) is at the Number 3 setting.



If necessary, use the valves in the pool equipment area to adjust the flow.

- **For skimmer connections on pools with one skimmer**, flow is automatically regulated by the FlowKeeper™ Valve. The red indicator should be at the proper setting.
- **For skimmer connections on pools with more than one skimmer**, leave the valve for the skimmer connected to the hose open and slowly close the other until the proper setting is reached.
- **For dedicated suction line connections**, leave the vacuum line open to the cleaner and slowly close the skimmer line until the flow is at the proper setting.

If flow is in the low range (0-2):

- Check and clean the pool filter and baskets if necessary.
- Verify that valves controlling the suction lines are in the correct position.

If flow is in the high range (4-6):

- Verify that valves controlling the suction lines are in the correct position.
- Lower the flow setting on the FlowKeeper Valve.

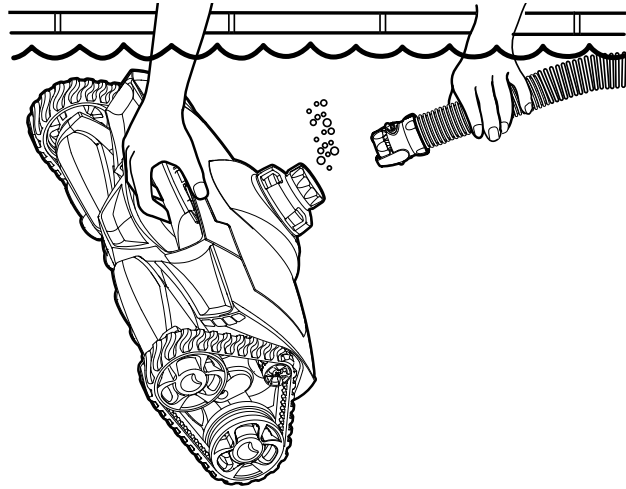
Connect the Cleaner

WARNING

To avoid serious injury, make sure to turn off the suction pump that is responsible for the pool cleaner operation. Do not expose your hair, loose clothing, jewelry, etc. to the open end of the hose.

Turn off the pump. Keeping the hose underwater, remove the Flow Gauge.

1. Submerge the cleaner and flood it with water.
2. When bubbles stop coming from the cleaner, connect the hose by pushing the Quick Connector onto the cleaner.
3. Allow the cleaner to sink to the bottom of the pool.
4. Turn on the pool pump and begin cleaning.



The Baracuda® MX™ 8 cycles on/off with the pool filtration pump, vacuuming and cleaning all surfaces randomly throughout the pool. The climbing ability of the cleaner is dependent on the pool's shape and available water flow. If Baracuda MX 8 is not climbing your walls, ensure the flow is correct by using the Flow Gauge. Also, ensure the pool's surface is not covered in algae as this slippery surface will affect the cleaner's traction.

During each coverage pattern cycle, the cleaner travels both forward and backwards, and pivots to the right and left. The power scrubbers underneath the cleaner create down force for climbing and stability as well as directing debris into the cleaner mouth.

Emptying the Pump Basket

For the Baracuda MX 8 to operate at optimum efficiency, empty the pump basket regularly. The more debris in the pool, the more often the pump basket should be cleared. Zodiac® offers an in-line leaf canister which will trap solid debris before it enters the pump basket. See your Zodiac dealer for details.

Backwashing the Pool Filter

Always disconnect the Baracuda MX 8 from the pool wall before cleaning or backwashing the pool filter. After cleaning or backwashing, let the filtration system run for at least five (5) minutes to flush out the suction lines before re-connecting the cleaner.

Adding Chemical to the Pool

Remove the cleaner from the pool for at least four (4) hours when adding chemicals.

Storage and Winterizing

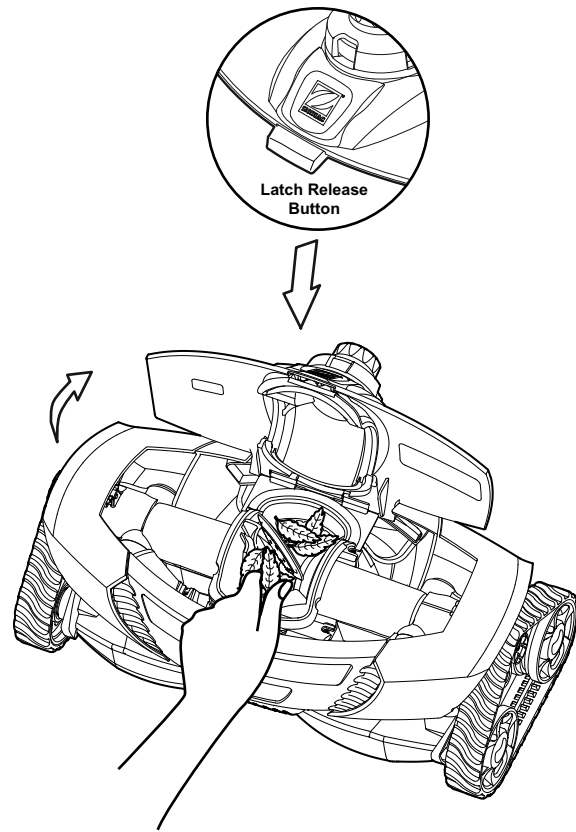
Never store the Baracuda MX 8 in direct sunlight. When storing for the winter, drain out all the water (freeze damage is not covered by the warranty). Remove all connectors and adapters from the dedicated suction line or skimmer. When storing the cleaner, even for short times, do not coil the hose as the hose may develop a memory which can affect cleaner performance. Disassemble the hoses and layout flat.

Remove Debris from Engine

WARNING

To avoid serious injury, make sure that the cleaner is disconnected from the hose and the suction pump used for the cleaner is turned off prior starting this operation.

- 1) Push the latch release button on the top of the cleaner.
- 2) Rotate the top assembly back until it clicks into an upward position.
- 3) Look into engine and remove debris that is present.
- 4) If needed, slowly push engine paddles forward and/or backwards to move stuck debris to an accessible position then remove it. When moving the engine paddles, make sure the cleaner tracks are allowed to move freely as they will turn as the engine paddles rotate.
- 5) Close engine top and ensure the latch clicks in place.

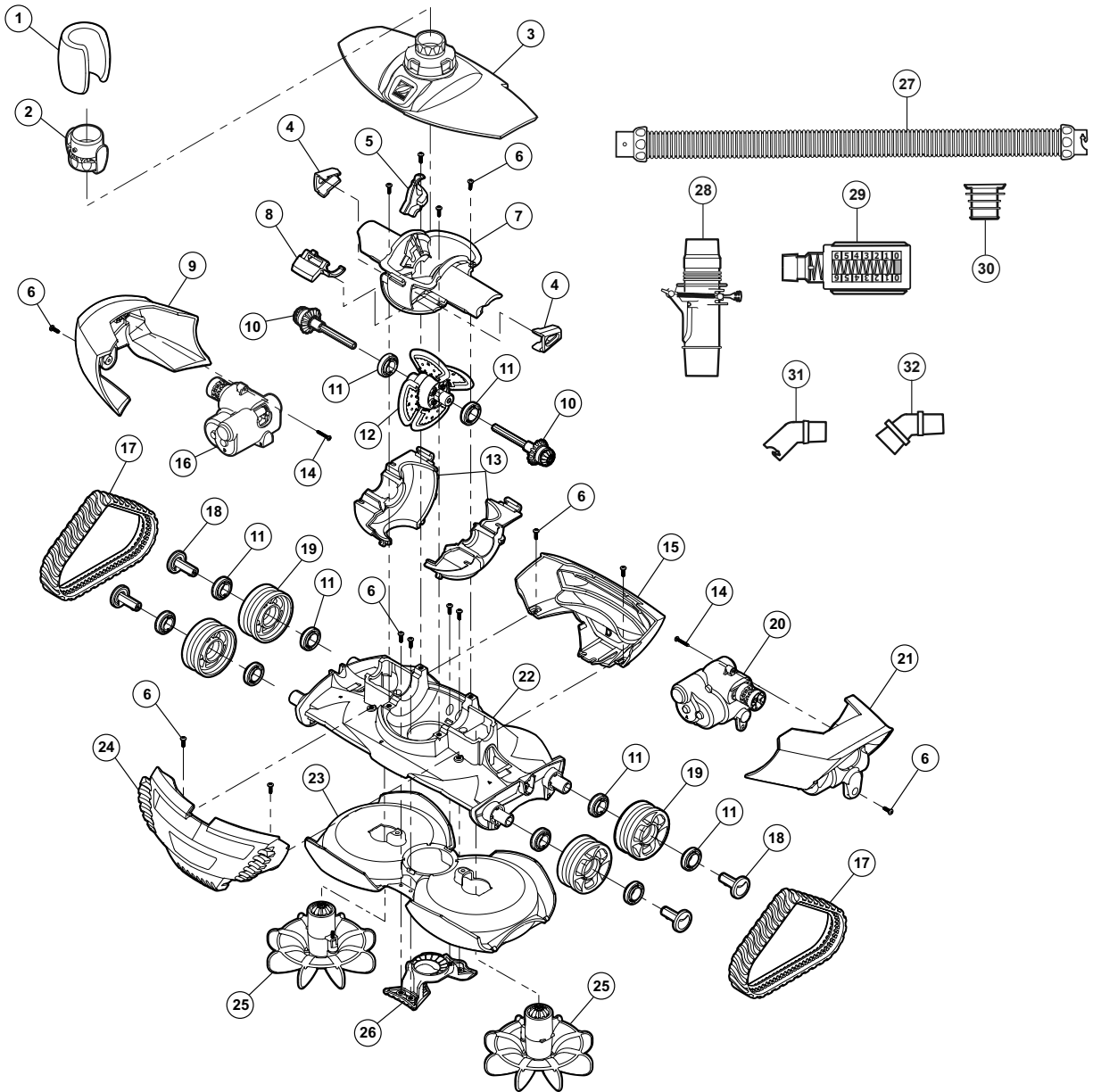


Troubleshooting

If you experience a problem with your Baracuda® MX™ 8, please follow the troubleshooting steps below to restore performance. If further assistance is required, contact Zodiac® Technical Support Department at (800) 822-7933. Please have your serial number and date of purchase available when you call.

Problem	Solution
Cleaner does not move or moves slowly.	<ul style="list-style-type: none">• Confirm that the main drain is closed.• Use Flow Gauge to verify proper flow.• Check for debris jammed in engine. Backwash filter and empty pump basket.• Check for air in system. If water level in pump basket drops or you see excessive air bubbles in the pump basket or coming from the return lines, there is air in the system. Check hose connections, tighten all fittings at pump and check o-ring at pump basket for wear.
Cleaner patterns, does not cover entire pool.	<ul style="list-style-type: none">• Use Flow Gauge to verify proper flow.• Ensure return fittings are directed down. Add a return diverter if necessary.• Make sure hose is not kinked or coiled. Lay in sun to straighten if necessary.• Verify correct hose float positioning.• Observe cleaner for more than five (5) minutes and ensure that each drive track is periodically reversing direction. If it is not, contact you dealer or service center for help.• Confirm proper hose length.
Cleaner gets stuck at steps.	<ul style="list-style-type: none">• Observe cleaner for more than five (5) minutes and ensure that each drive track is periodically reversing direction. If it is not, contact you dealer or service center for help.• Ensure the swivel on top of the cleaner rotates freely.• Use Flow Gauge to verify proper flow.• Confirm proper hose length. Shorten if necessary.
Cleaner won't climb walls.	<ul style="list-style-type: none">• Using Flow Gauge as guide, increase flow to cleaner.• Verify correct hose float positioning.
Cleaner climbs too much.	<ul style="list-style-type: none">• Using Flow Gauge as guide, reduce flow to the second setting.• Verify correct hose float position.

Baracuda® MX™ 8 Parts Diagram



English

No.	Part #	Description	Qty.	No.	Part #	Description	Qty.
1	R0526800	MX8 HOSE FLOAT	1	17	R0526100	MX8 TRACK	2
2	R0526900	QUICK CONNECTOR (BLUE)	1	18	R0526200	MX8 WHEEL PIN	4
3	R0525400	MX8 TOP COVER W/SWIVEL ASSEMBLY	1	19	R0526000	MX8 WHEEL	4
4	R0526500	MX8 ENGINE SEAL	2	20	R0524700	MX8 DIRECTION CONTROL DEVICE - SIDE A	1
5	R0526400	MX8 ENGINE GUIDE	1	21	R0526700	MX8 BODY PANEL - LEFT (A)	1
6	R0527100	SCREW, M4x12mm, PHILLIPS #2 PAN HEAD	16	22	R0525200	MX8 CHASSIS ASSEMBLY	1
7	R0525900	MX8 MIDDLE ENGINE HOUSING	1	23	R0525700	MX8 LOWER BODY HOUSING	1
8	R0526300	MX8 COVER LATCH	1	24	R0525500	MX8 BODY PANEL - FRONT (C)	1
9	R0526600	MX8 BODY PANEL - RIGHT (B)	1	25	R0525000	MX8 SCRUBBER ASSEMBLY	2
10	R0525100	MX8 DRIVE SHAFT ASSEMBLY	2	26	R0525300	MX8 INLET ASSEMBLY	1
11	R0527000	BEARING, (WHEEL & ENGINE)	10	27	R0527700	TWIST LOCK HOSE - 1 METER, BLUE/GRAY	12
12	R0524900	MX8 ENGINE ASSEMBLY	1	28	R0527400	FLOWKEEPER™ VALVE	1
13	R0525800	MX8 LOWER ENGINE HOUSING	1	29	R0527500	FLOW GAUGE	1
14	R0527200	SCREW, THREAD FORMING, #6-18 7/8in TYPE A, PHILLIPS #2 PAN HEAD	2	30	R0527600	IN-GROUND VALVE CUFF	1
15	R0525600	MX8 BODY PANEL - REAR (D)	1	31	R0532400	TWIST-LOCK 45 DEG ELBOW, EXTENDED	1
16	R0524800	MX8 DIRECTION CONTROL DEVICE - SIDE B	1	32	R0532500	45 DEG ELBOW	1